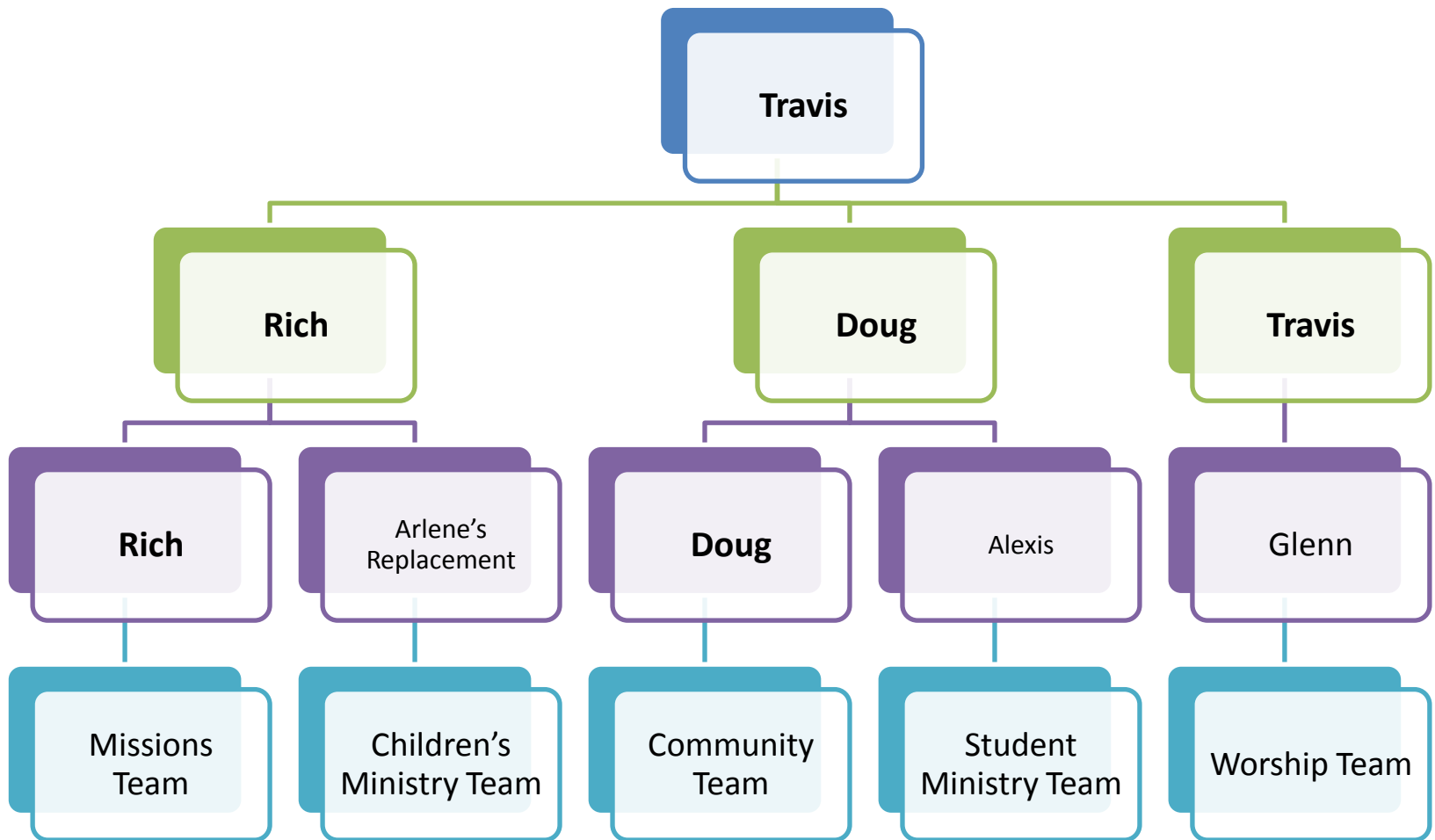
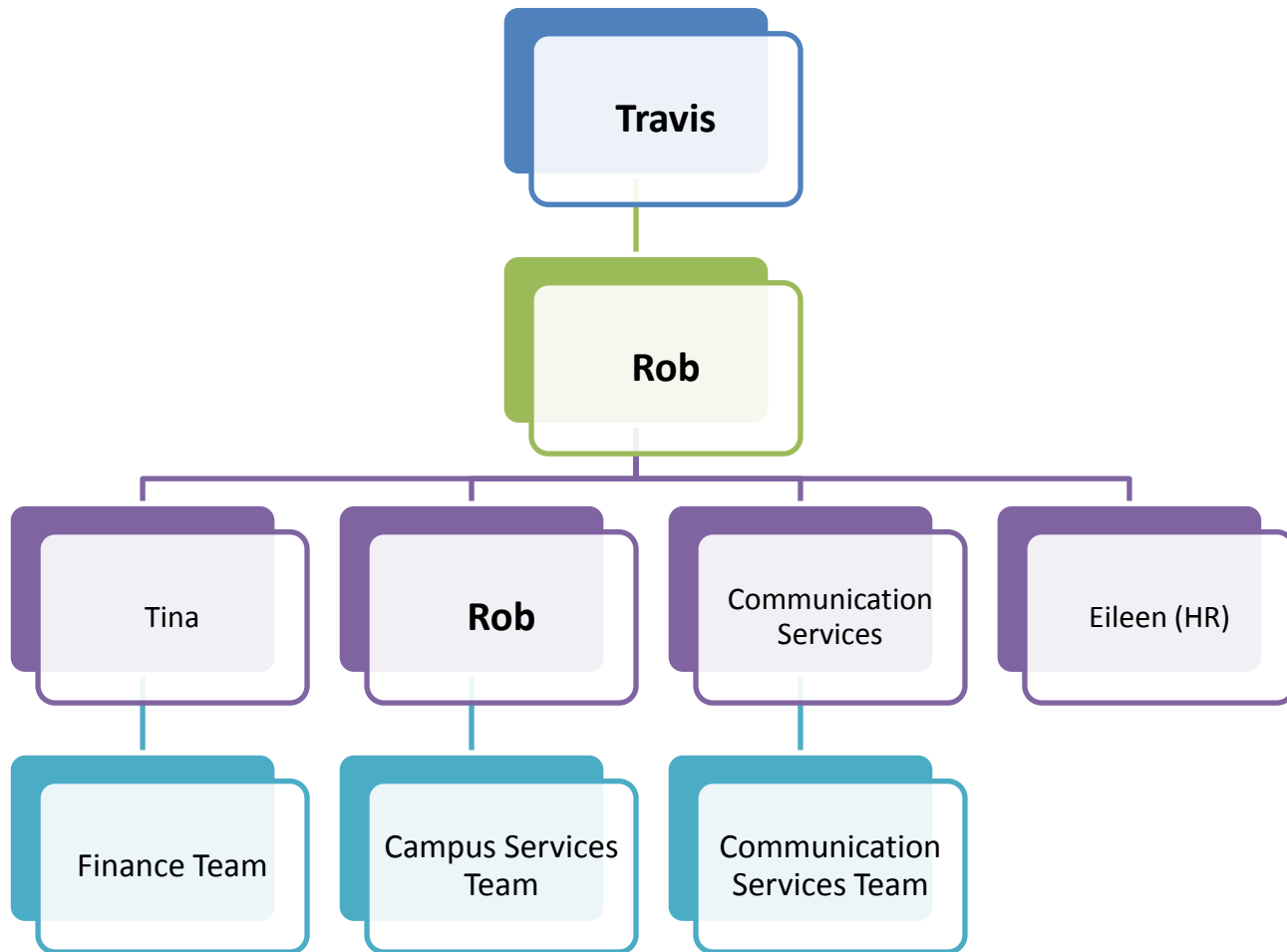


# Ministry



# Support Services



# Relational Impact:

People who have or will leave staff in 2014

- Dick Woodward
- Arlene Vander Loon
- Kevin Wilkins
- Geoff Geiling
- Andrew Petty
- Lynette Nice
- Tim Latham

# Dick Woodward on Transitions

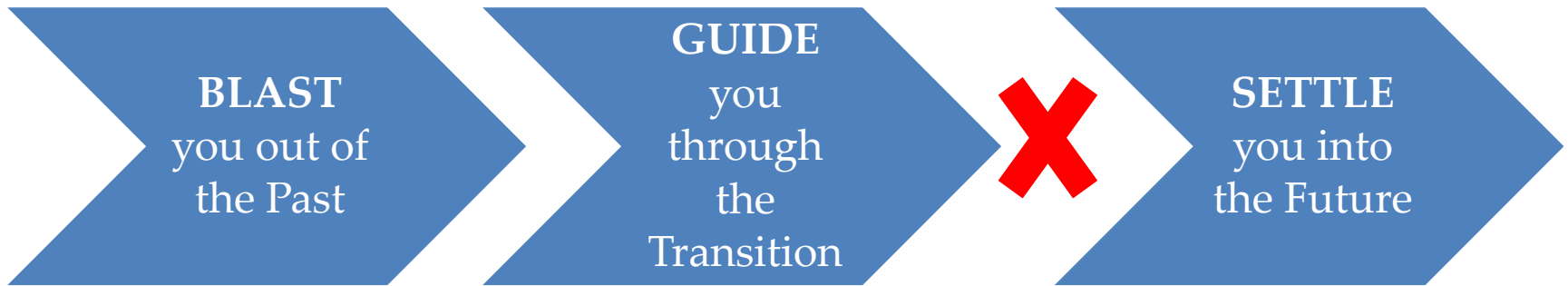


**BLAST**  
you out of  
the Past

**GUIDE**  
you  
through the  
Transition

**SETTLE**  
you into  
the Future

# Dick Woodward on Transitions



**We Are Here**

# Budget Buckets

3.8	4.2	4.5
Efficiency	Invest in Future Ministry Priorities	Appropriate Reserves
Realignment	3 Percent	Long Term Sustainability for Chapel Campus
Increased Focus on Equipping	Fix Salary Issues	Stability for the Future
Scrutinize Priorities	2 or Possibly 3 Strategic Hires	